



TRAVESÍA OVERLANDERS HNOS. FABIÁN Y ESTEBAN MOSCOSO PAREDES – ABRIL 2024



OVERLANDERS

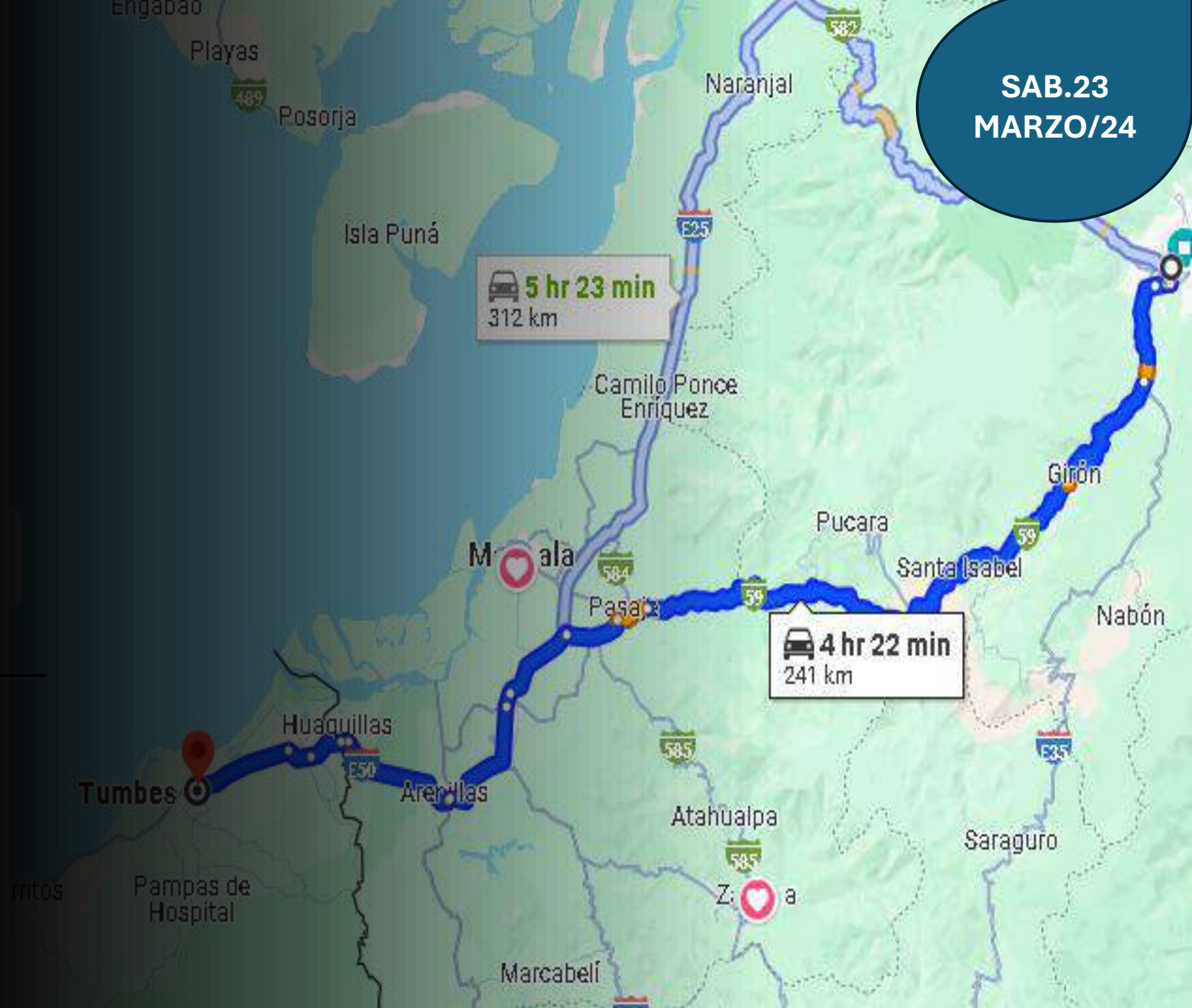
2.0 | CATARATAS
IGUAZÚ



7 PAISES
ABRIL 2024



Cuenca – Tumbes PERÚ 241 Km



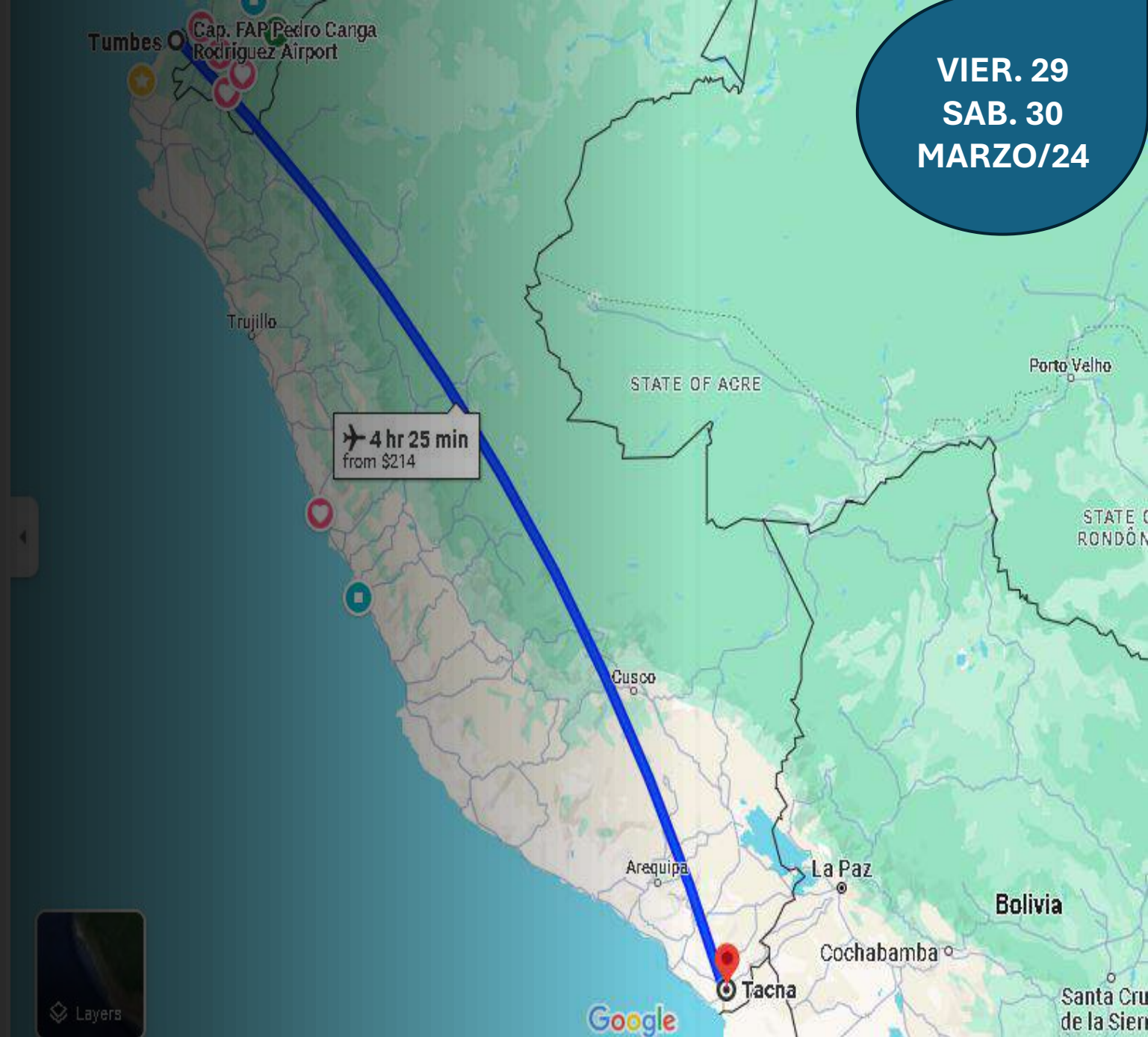






ENLACE VÍA AÉREA

**Tumbes -
Lima -
Tacna
PERÚ
2.491 Km**










Tacna
PERÚ -
Iquique
CHILE
365 Km

SAB. 30
MARZO/24

 **4 hr 48 min**
365 km



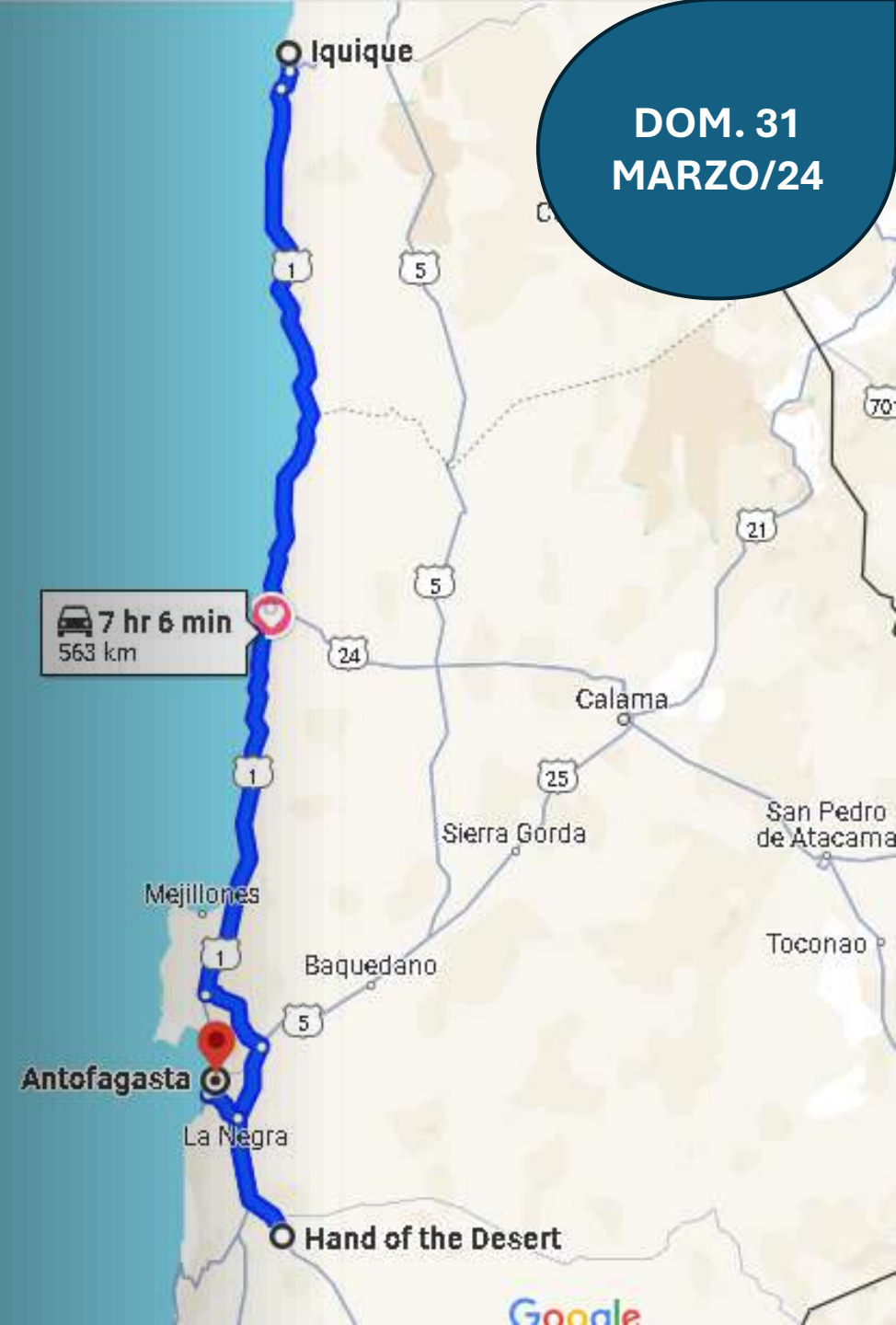








Iquique -
Mano del Desierto -
Antofagasta
CHILE
563 Km









← Antofagasta
Tocopilla →













LUNES 01
ABRIL/24



ANTOFAGASTA – SAN PEDRO DE ATACAMA (CHILE) 312 KM.















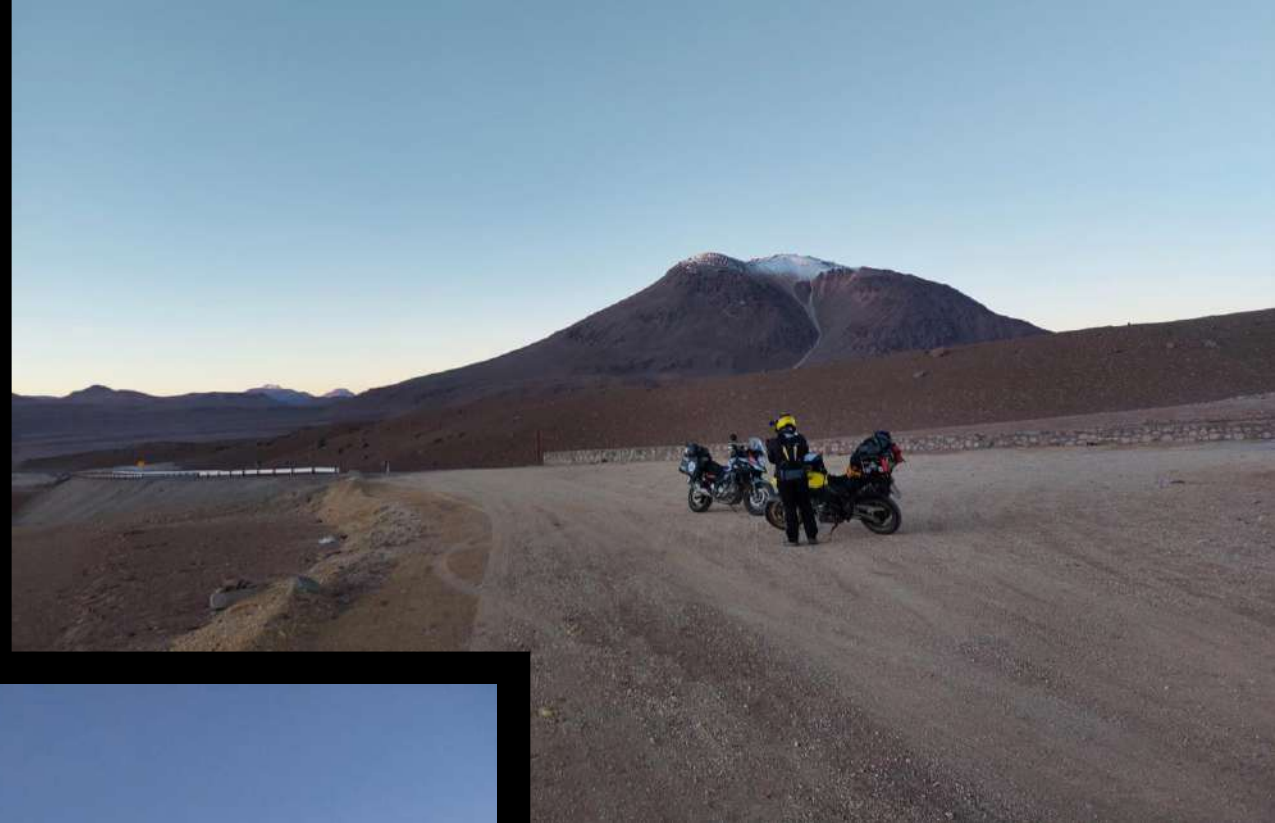
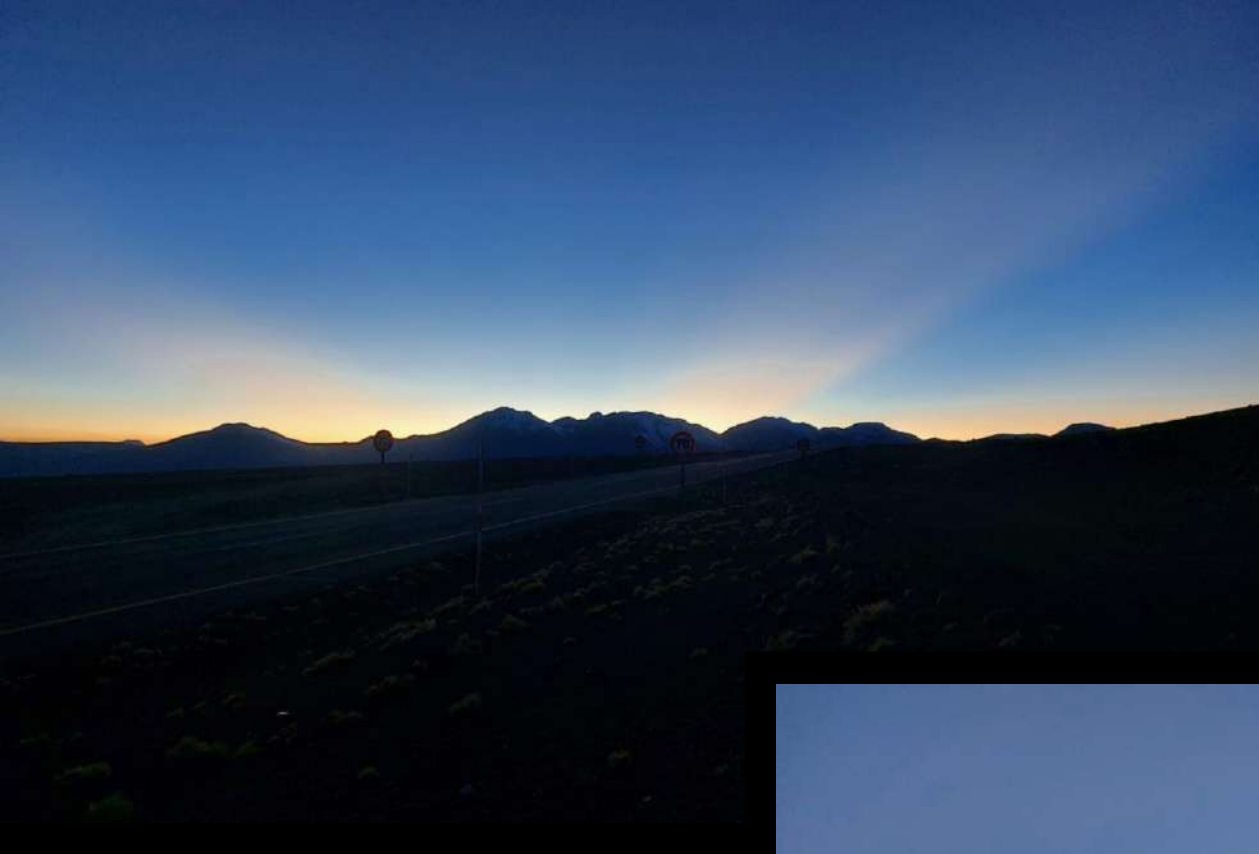
MAR. 02
ABRIL/24

6 hr 23 min
476 km

San Pedro De Atacama CHILE - San Salvador De Jujuy ARGENTINA

476 Km

















**MIER. 03
ABRIL/24**

10 hr 57 min
847 km

San Salvador de Jujuy - Resistencia

ARGENTINA 850 Km







Resistencia ARGENTINA - Cataratas Iguazu- BRASIL 650 Km

JUEV. 04
VIER. 05
ABRIL/24

8 hr 41 min
653 km

Google

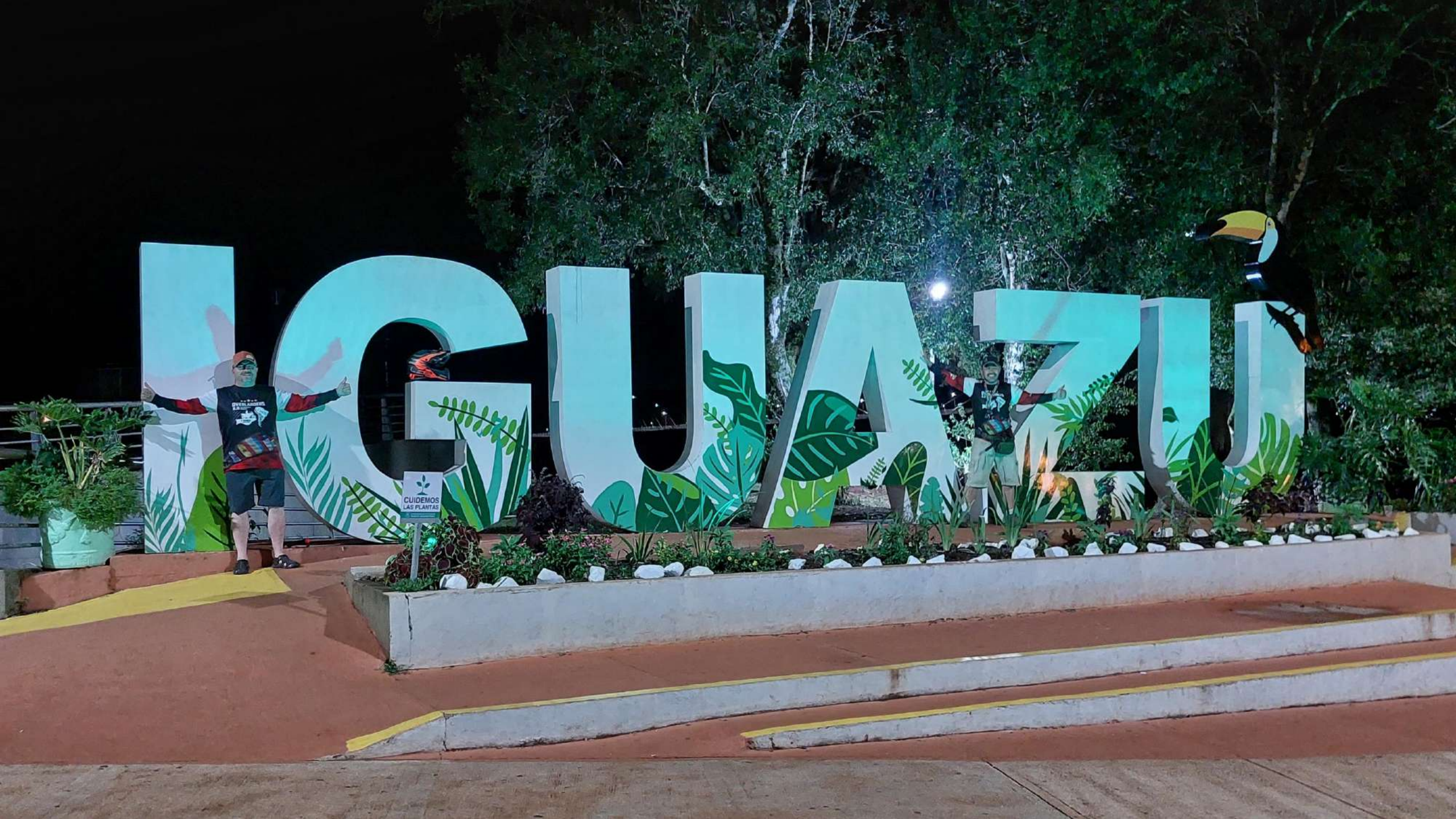




LOGUJAZU



CUIDEMOS
LAS PLANTAS







PARQUE NACIONAL
DO IGUAÇU

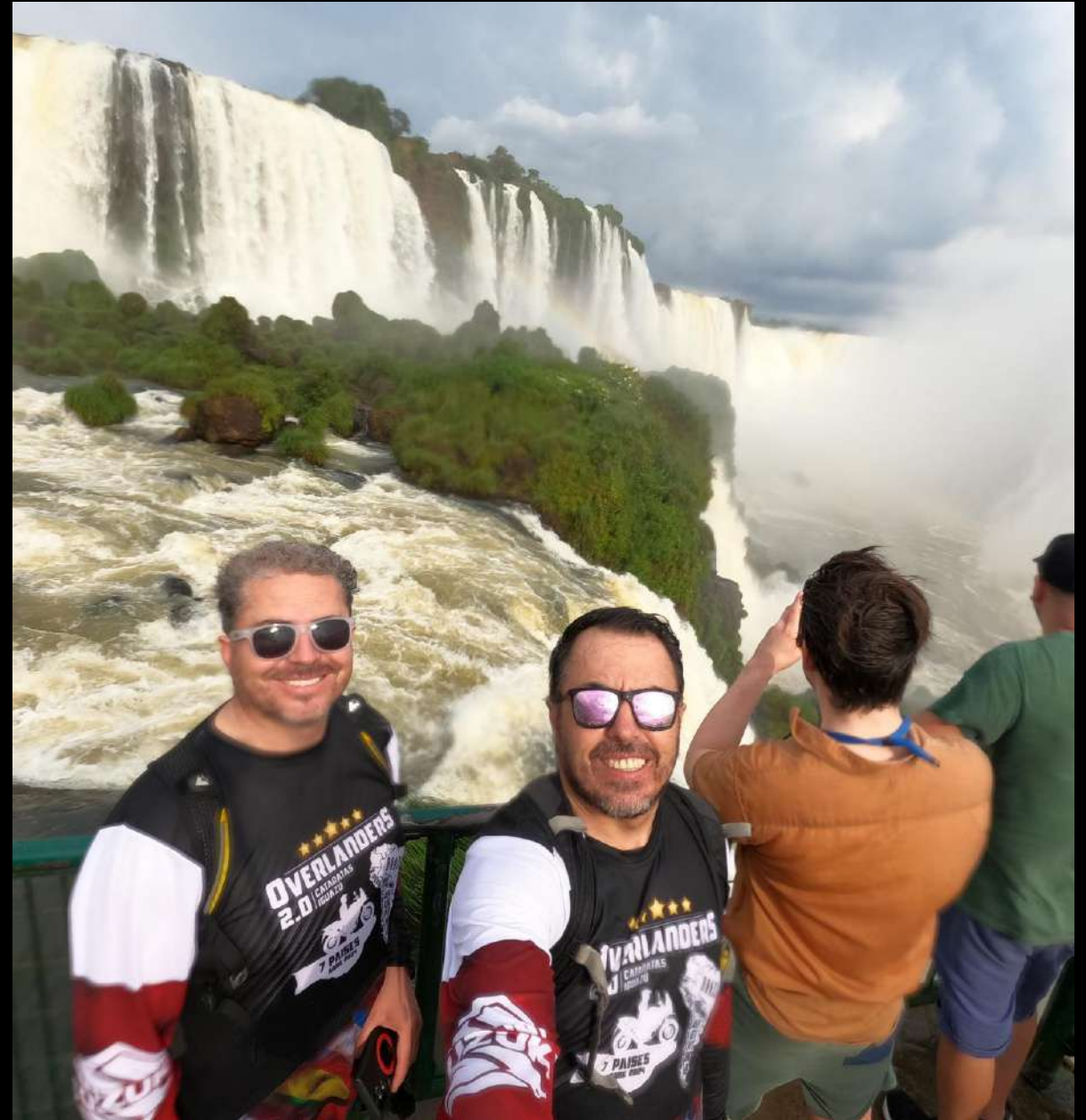
Bem-vindo às Cataratas do Iguaçu
Uma das 7 Maravilhas Mundiais da Natureza



TAXI

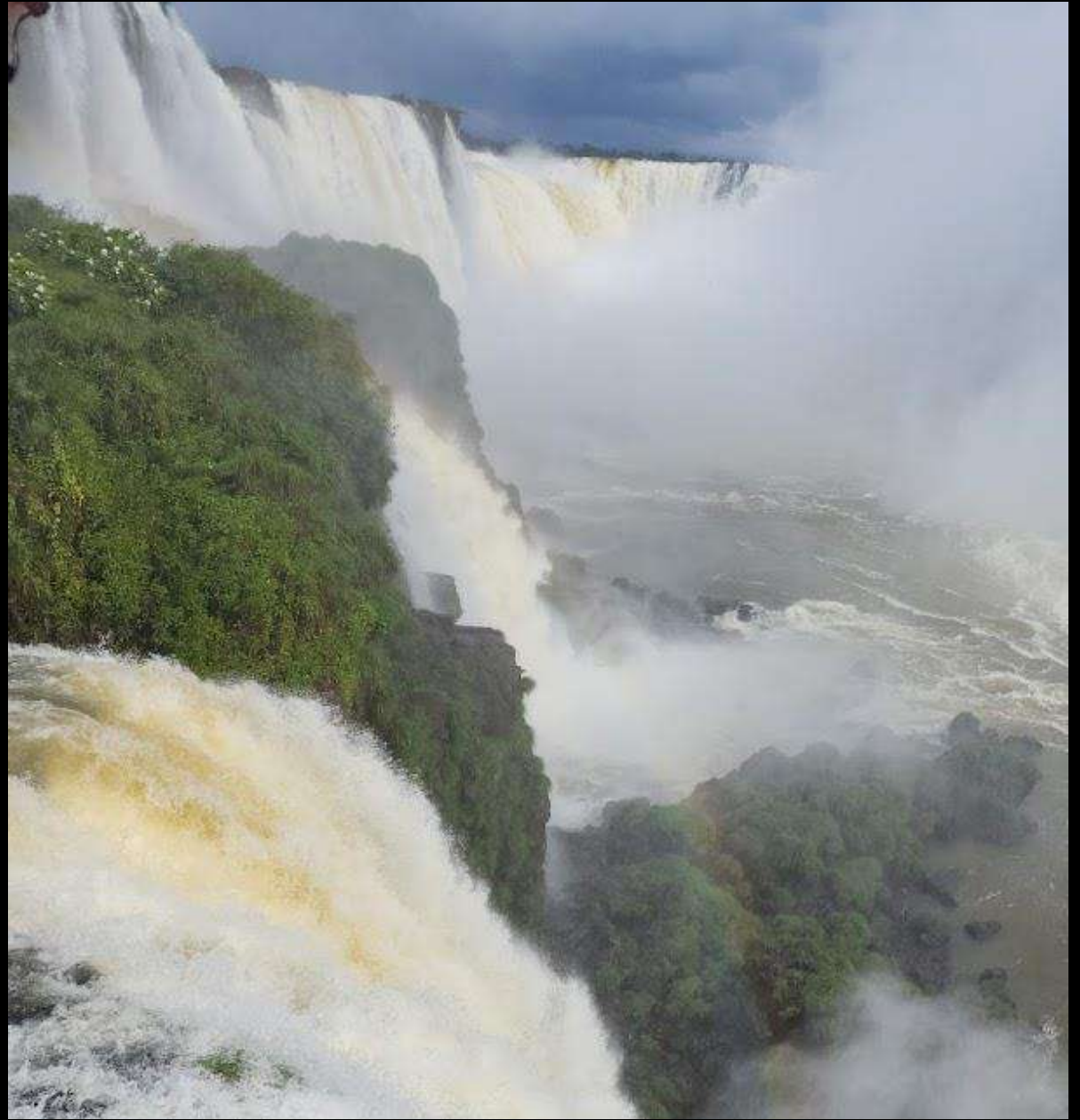












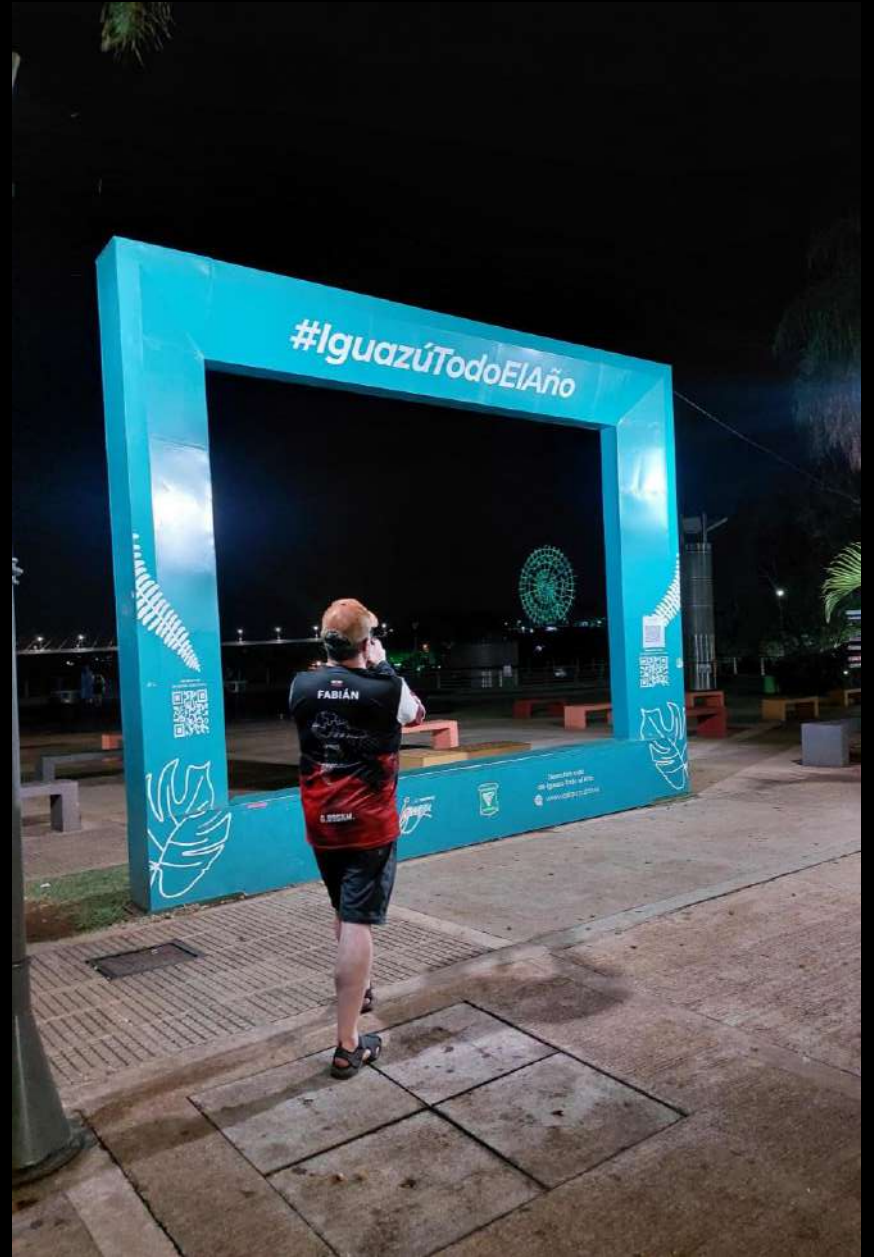












Cataratas Iguazu Argentina – Ciudad Del Este PARAGUAY 30 Km.

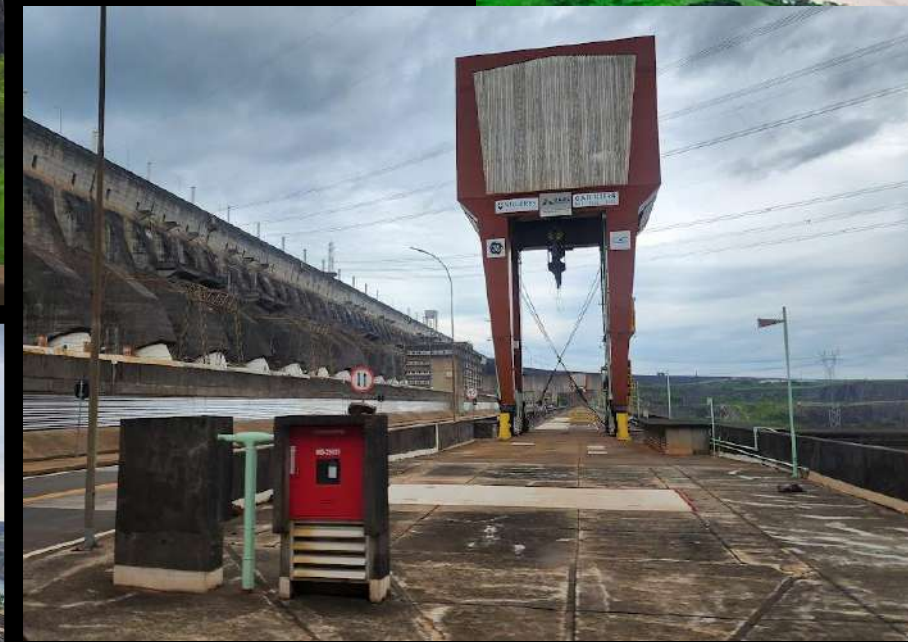
SAB. 06
ABRIL/24







ITAIPU
BINACIONAL





DOM. 07
LUN. 08
ABRIL/24

Ciudad del Este - Asunción

PARAGUAY 325 Km

4 hr 35 min
324 km











**MART. 09
ABRIL/24**



Asunción PARAGUAY – Aguas Blancas ARGENTINA – 935 Km

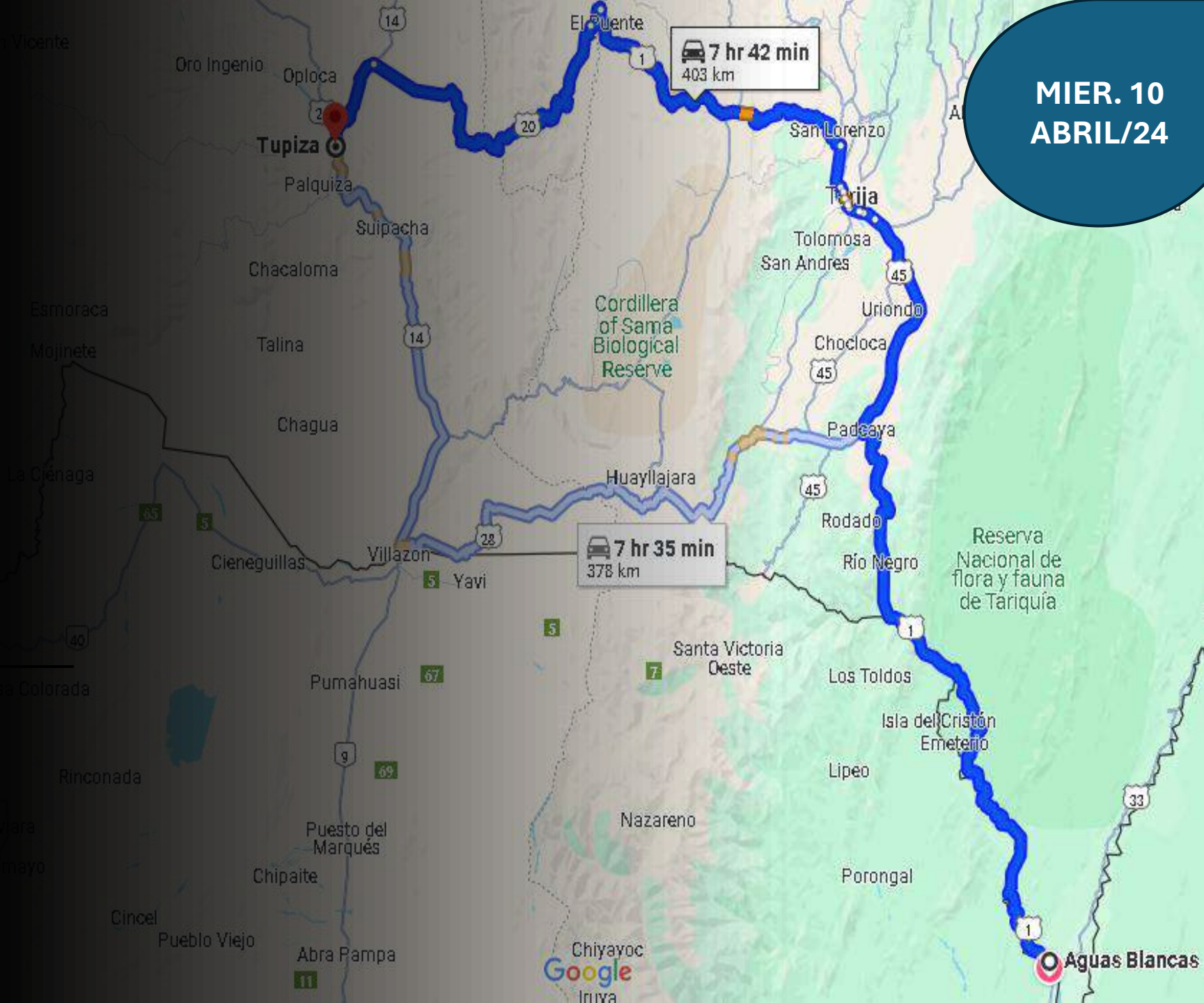








Aguas Blancas ARGENTINA - Tupiza BOLIVIA - 400 Km



**MIER. 10
ABRIL/24**





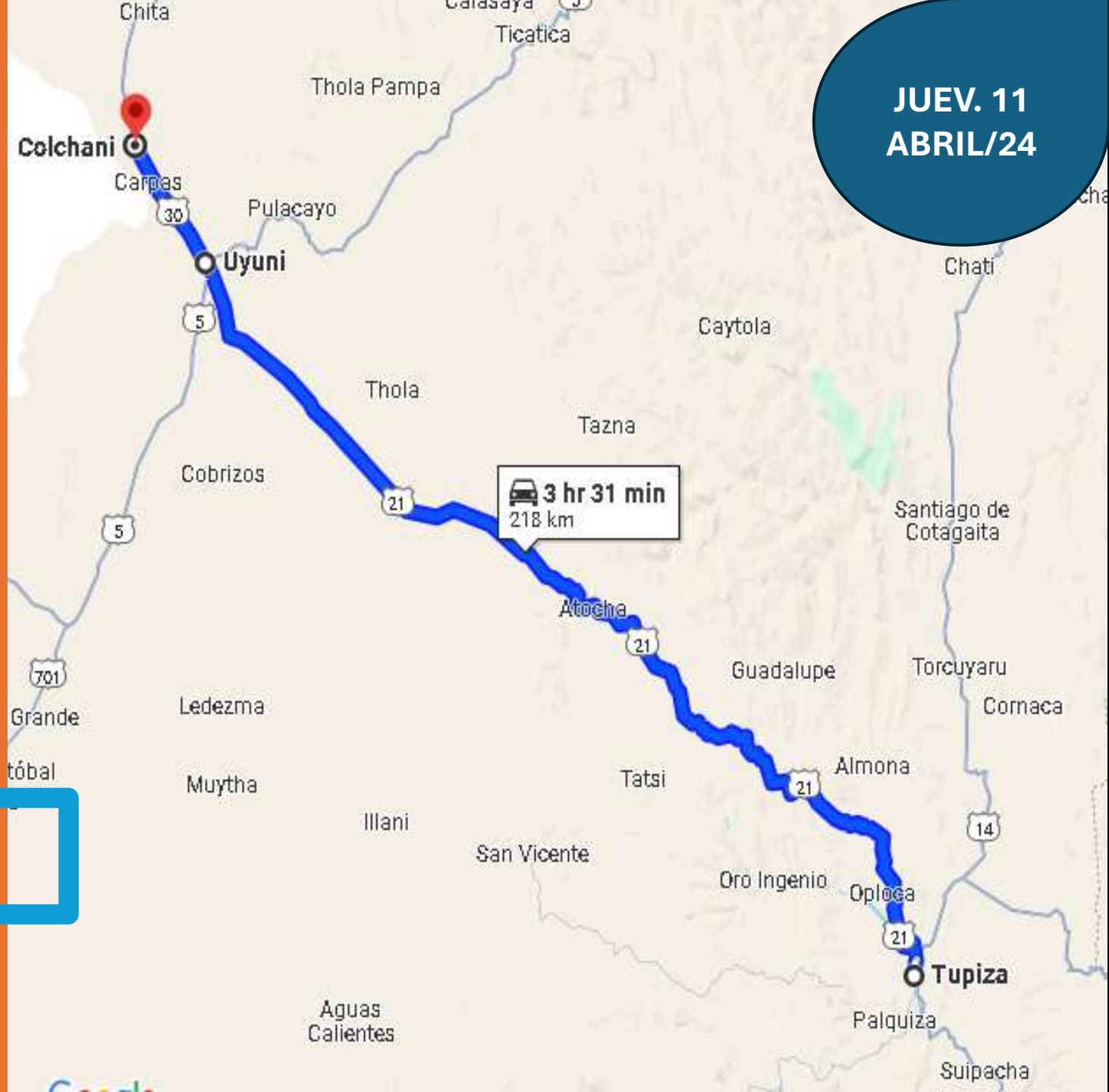








Tupiza- Salar de Uyuni BOLIVIA 220 Km





























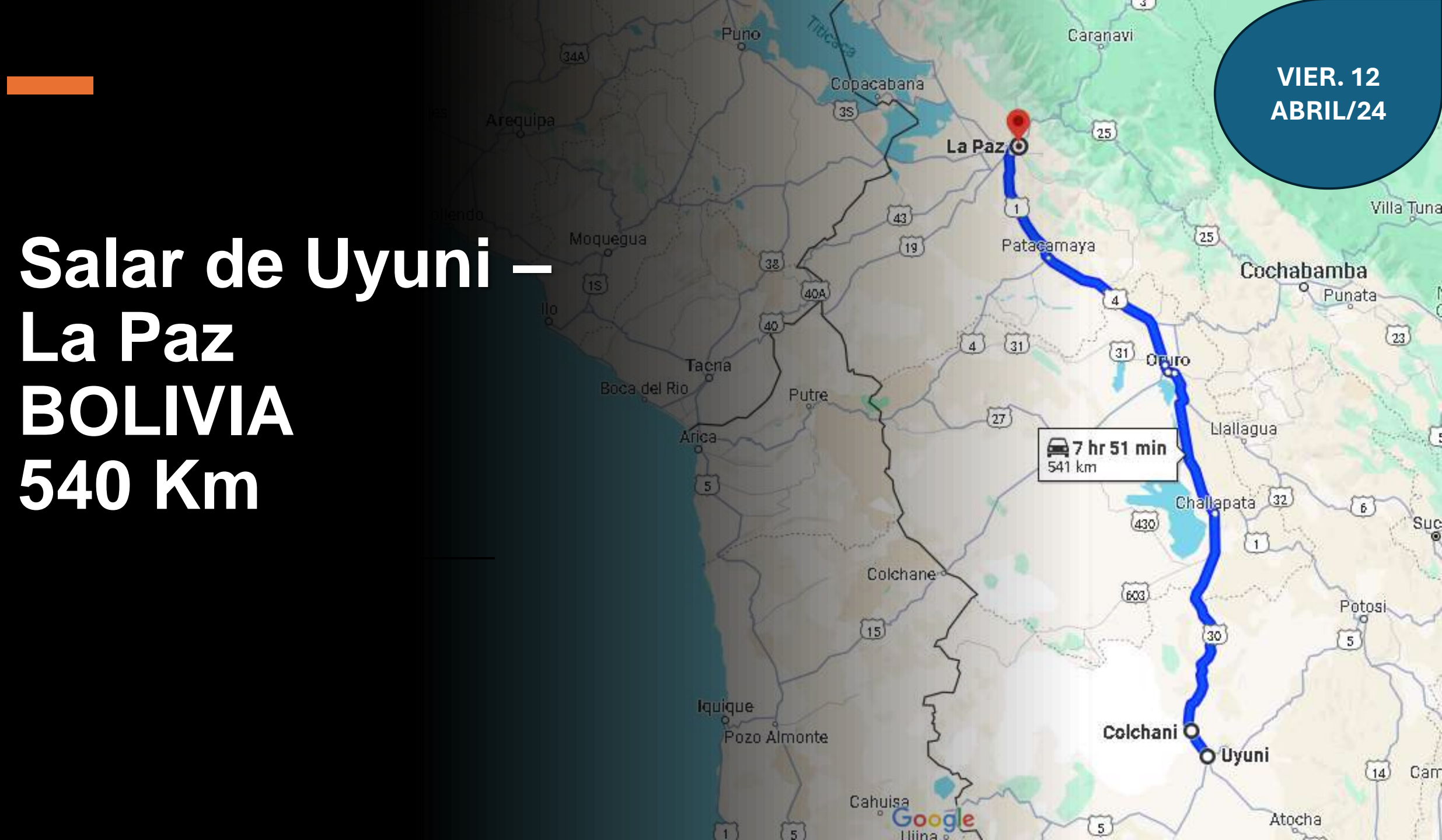






**Salar de Uyuni –
La Paz
BOLIVIA
540 Km**

**VIER. 12
ABRIL/24**







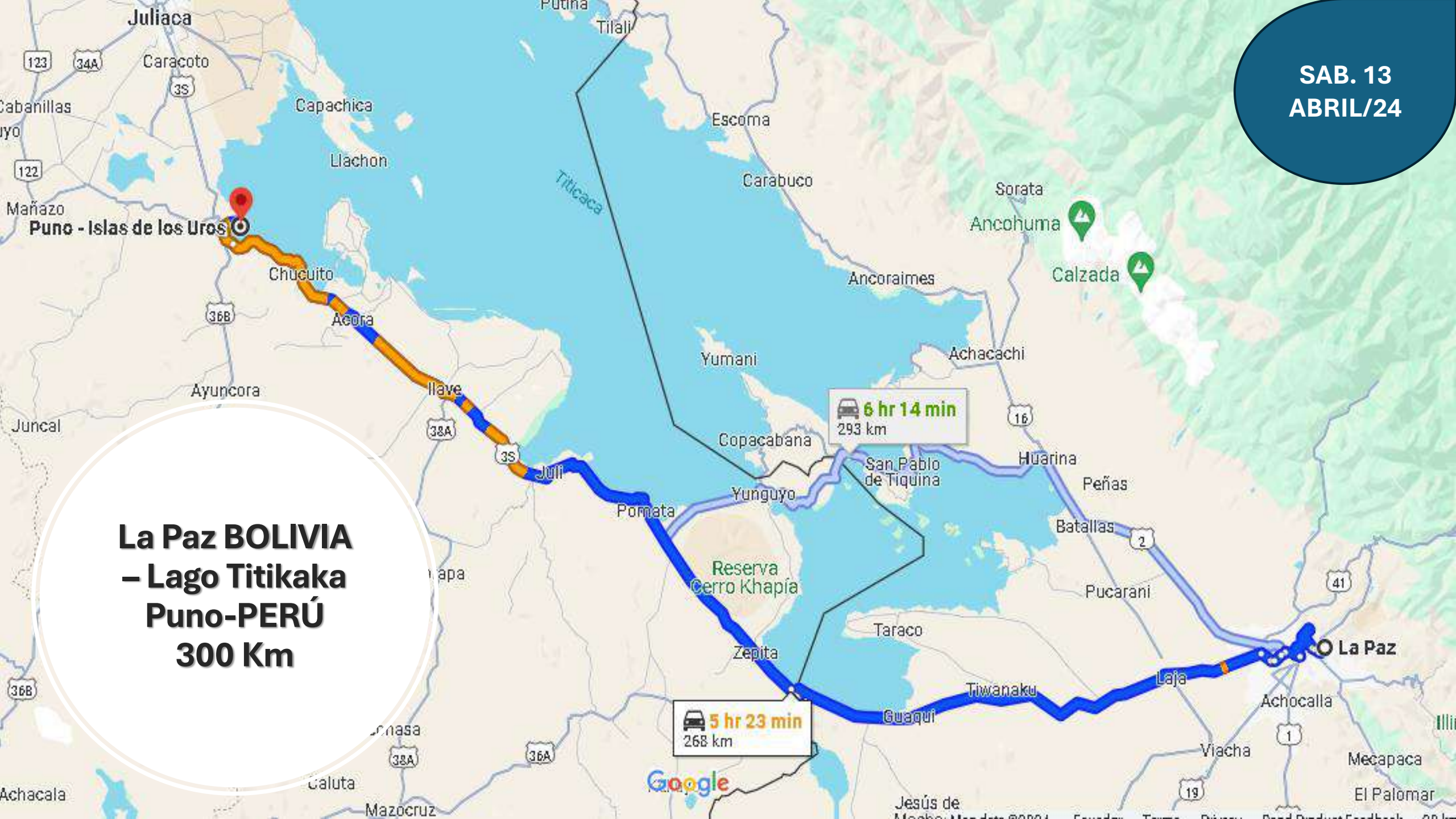


SAB. 13
ABRIL/24

**La Paz BOLIVIA
– Lago Titikaka
Puno-PERÚ
300 Km**

6 hr 14 min
293 km

5 hr 23 min
268 km

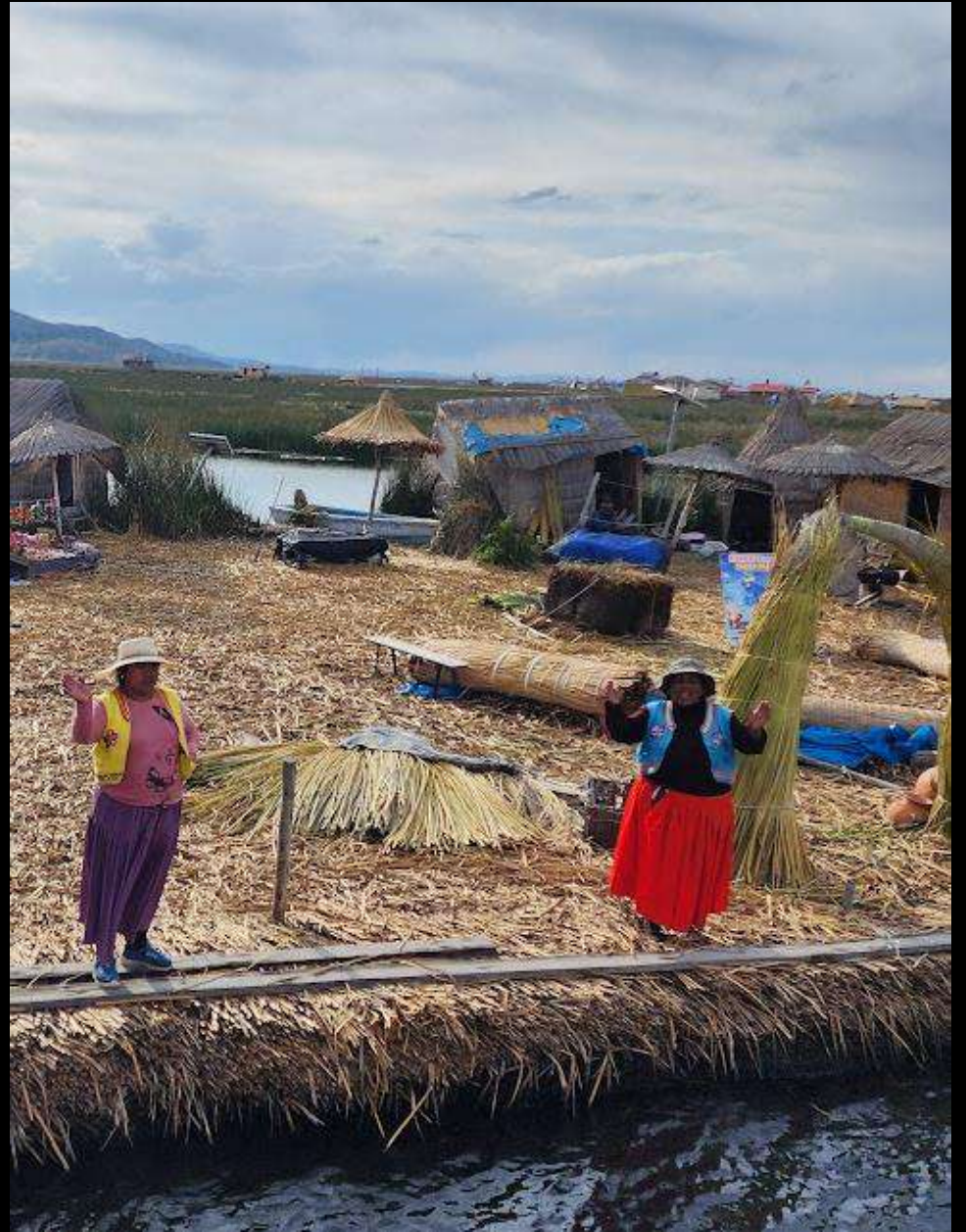












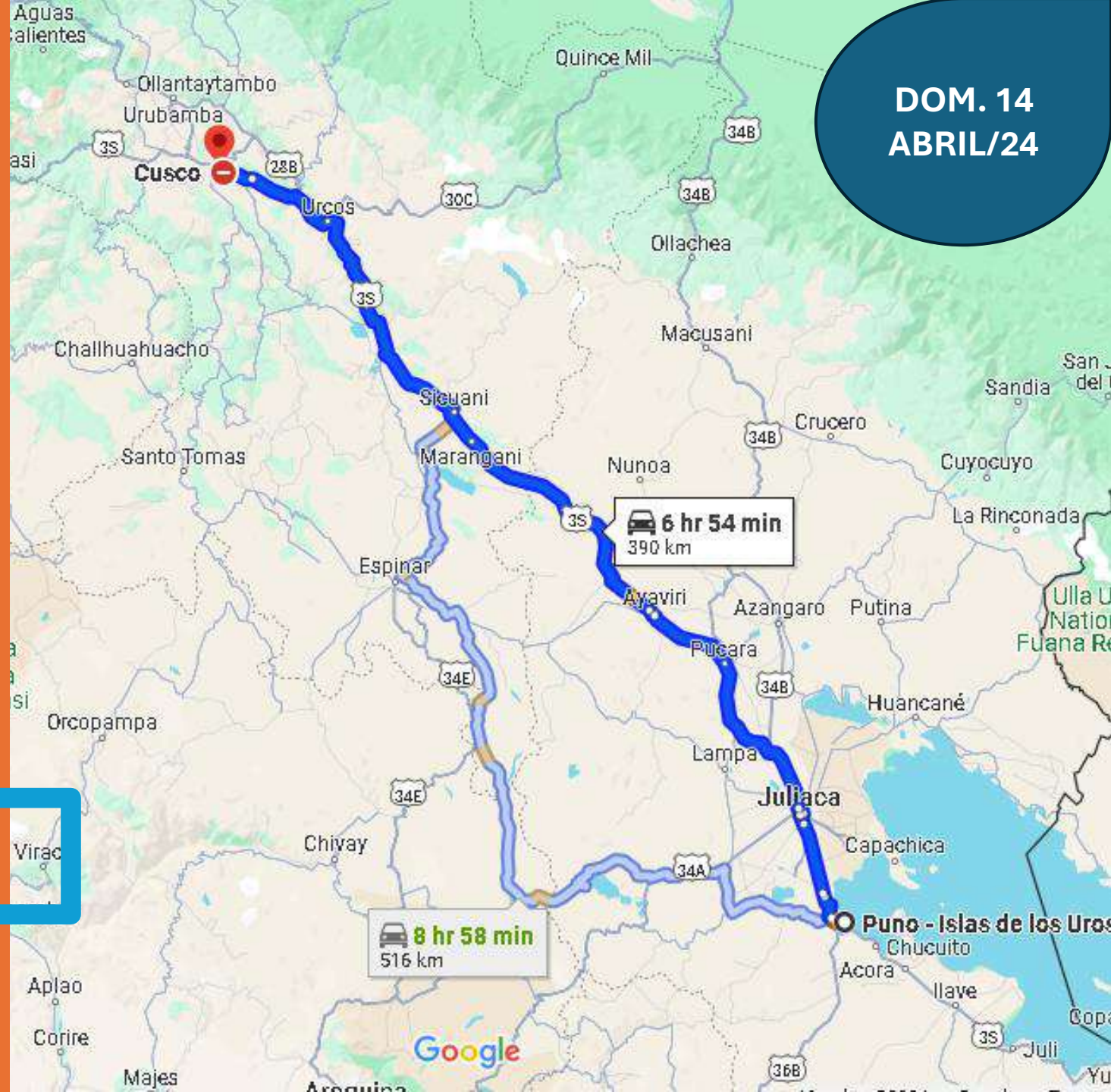






Lago Titikaka-
Cusco
PERÚ
270 Km

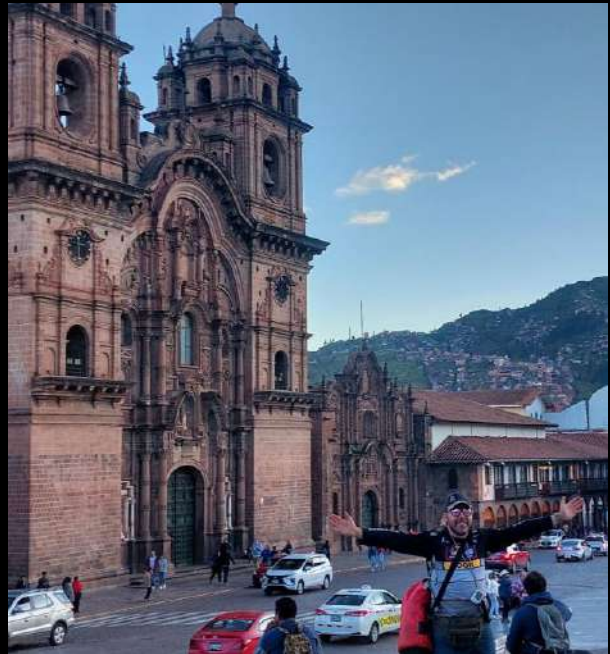
DOM. 14
ABRIL/24





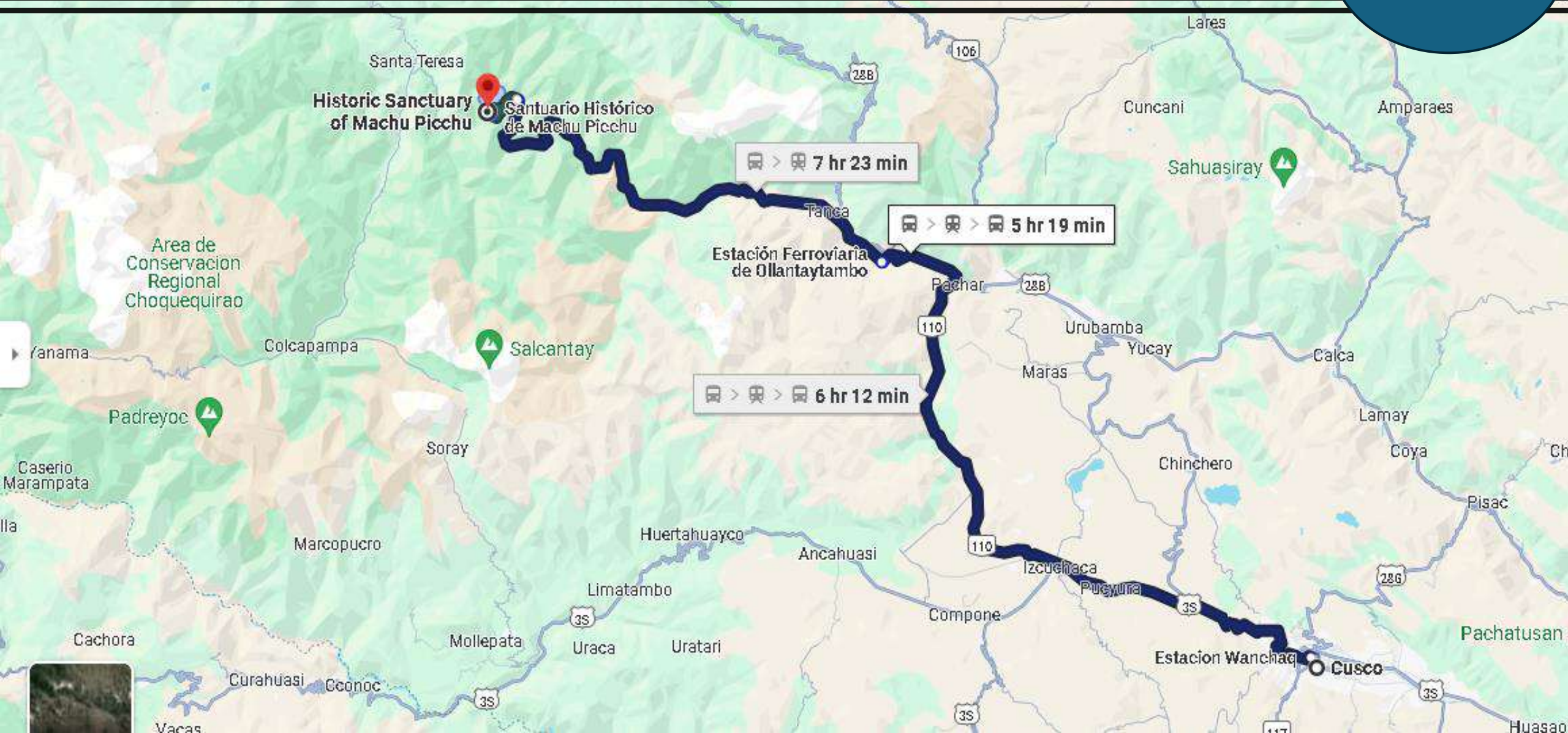






CUSCO - MACHUPICHU 80 KM.

LUN. 15
ABRIL/24



























ESTEBAN

EL DÍA QUE COMPRENDÍ QUE LO ÚNICO QUE ME VOY A LLEVAR ES LO QUE VIVO... EMPECÉ A VIVIR LO QUE ME QUIERO LLEVAR







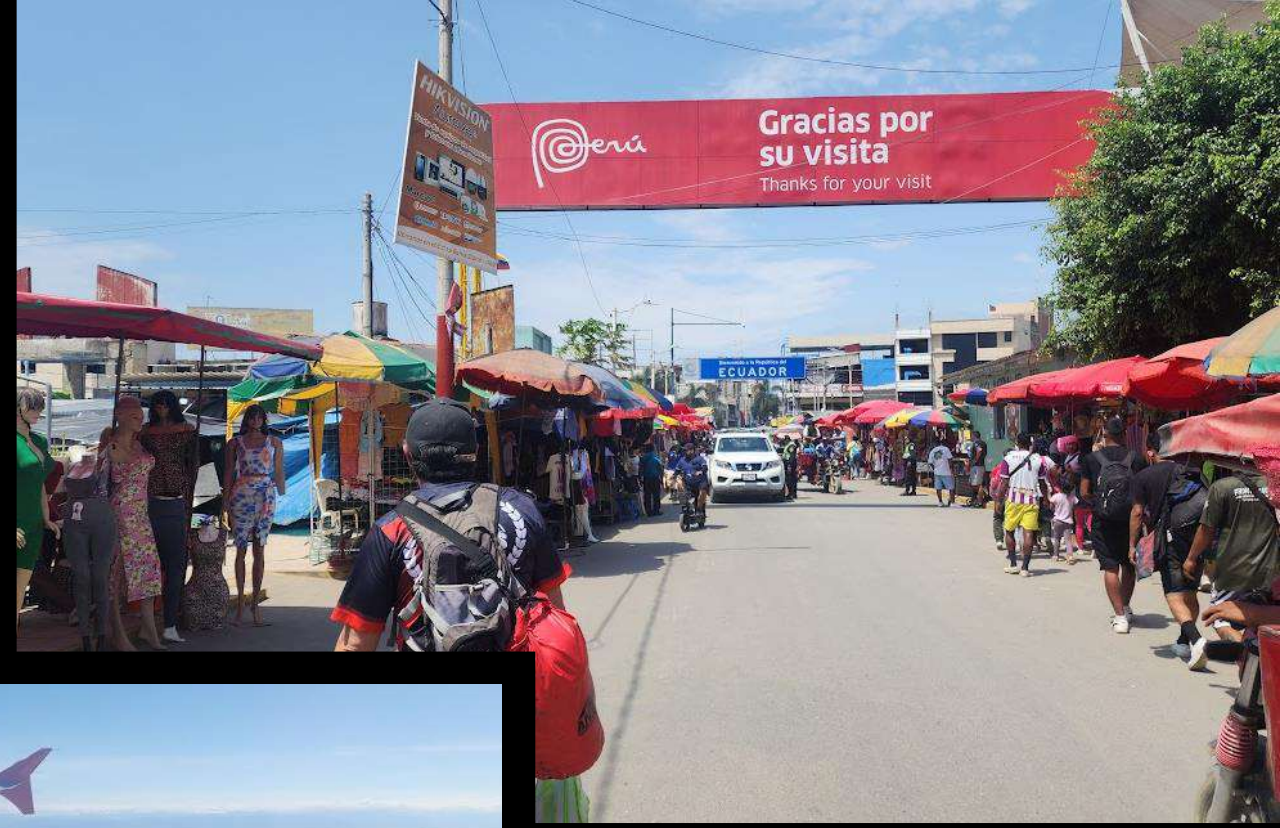












An abstract network diagram on a black background. It features several nodes, represented by small white circles with black outlines, connected by thin, curved lines in shades of red, orange, and cyan. The lines form a complex web that curves across the frame, suggesting a dynamic or evolving structure. The overall aesthetic is modern and digital.

**NO ES EL FIN
ES UN CONTINUARÁ...**